

HIV Prevention in the Home of Health Reform



Kenneth H. Mayer, M.D.
CFAR/APC ECHPP Conference 2012
Washington, DC, November 20th, 2012



Beth Israel Deaconess
Medical Center

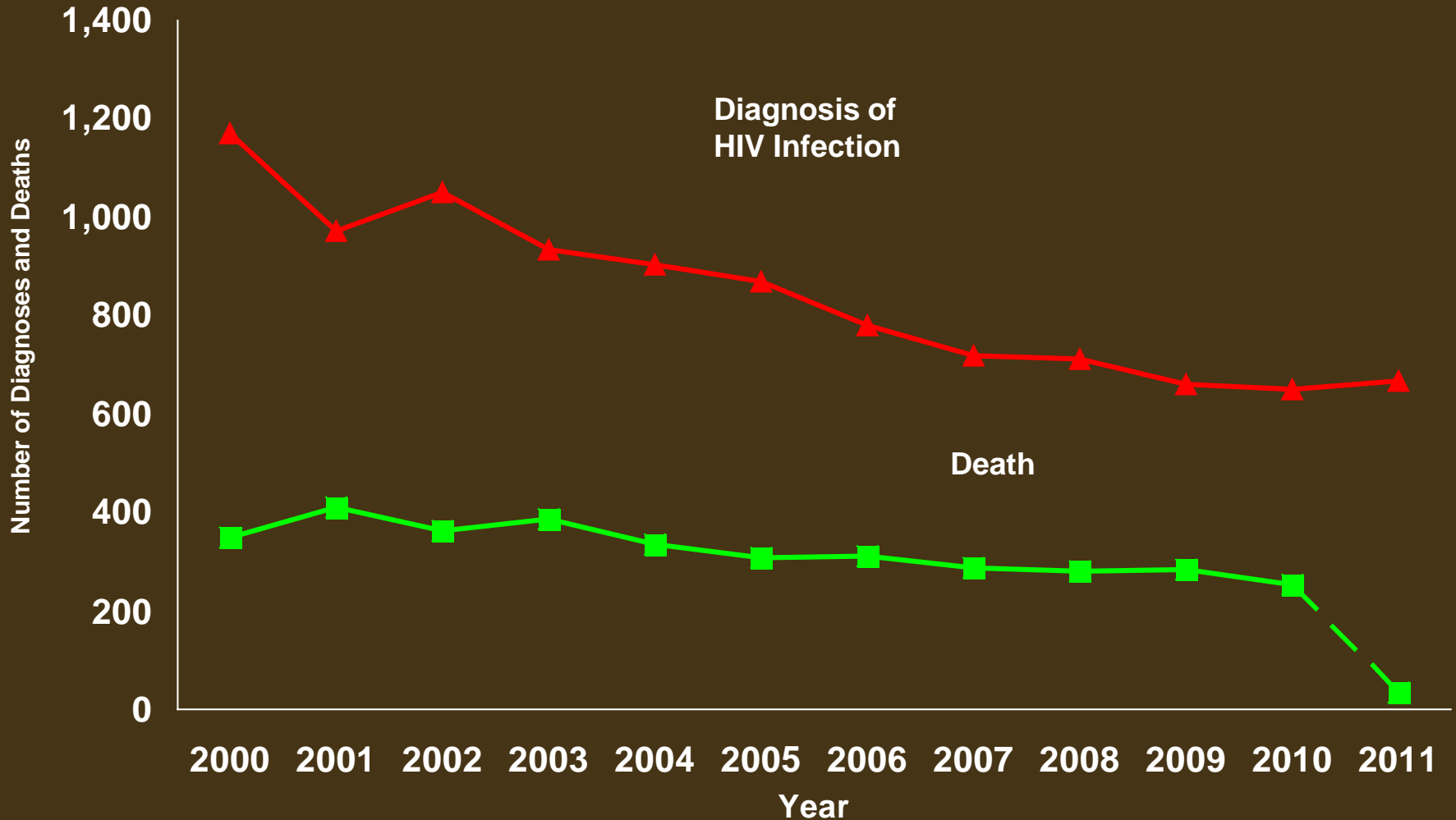


A teaching hospital
of Harvard
Medical School

Massachusetts HIV/AIDS Epidemic

- As of Sept, 2012: 31,153 MA residents have been diagnosed and reported with HIV/AIDS
 - 18,408 MA residents are living with HIV/AIDS
 - 12,745 MA residents have died
 - An additional 2,393 MA residents living with HIV/AIDS were first diagnosed in another state
- 649 new diagnoses reported in 2010
- 669 new diagnoses (preliminary) reported in 2011

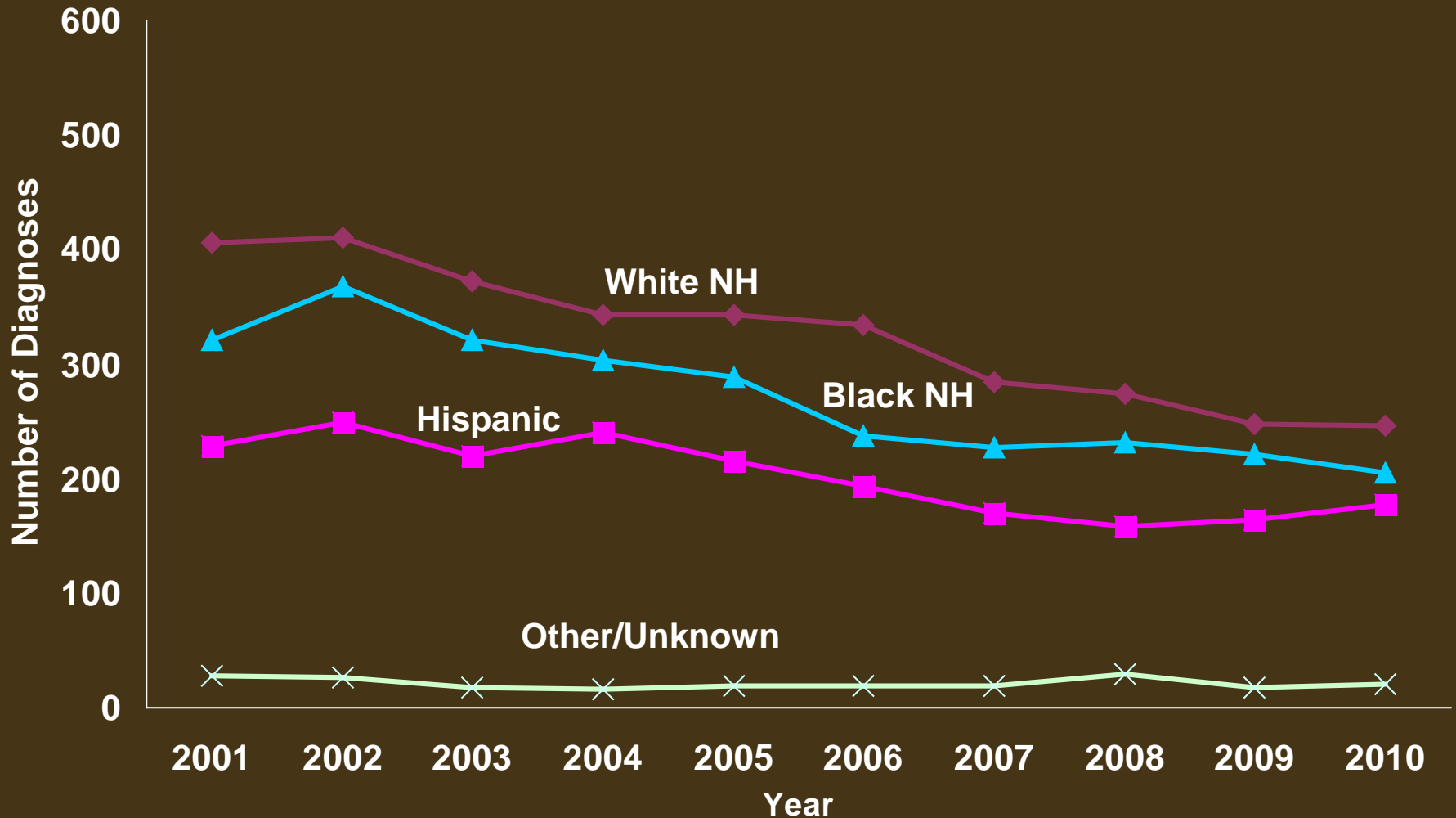
Trends in HIV Infection and Death among People Reported with HIV/AIDS by Year: Massachusetts, 2000–2011



Note: 2011 Death data are preliminary

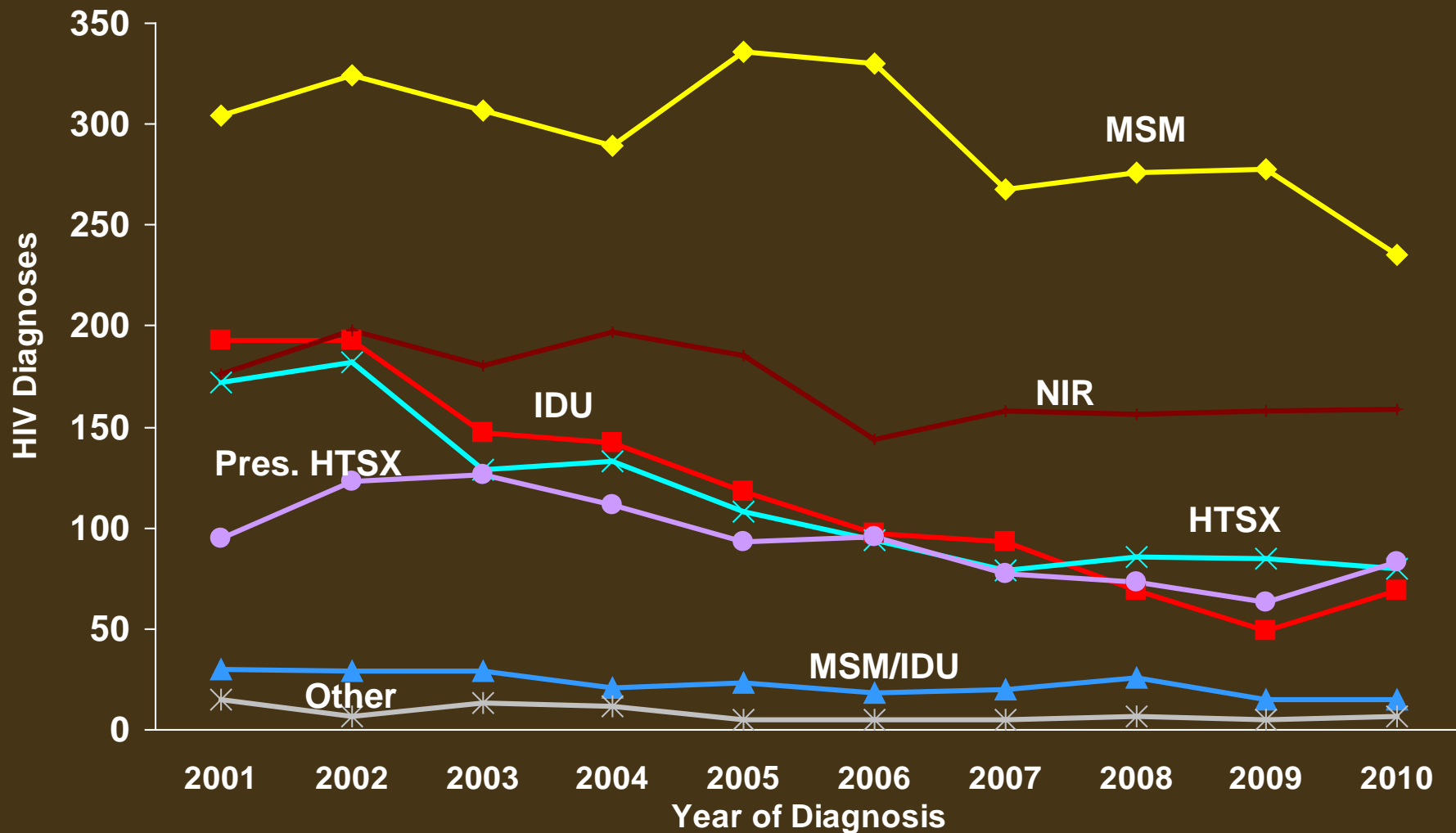
Data Source: MDPH HIV/AIDS Surveillance Program; Data as of 9/1/12

People Diagnosed with HIV Infection by Race/Ethnicity and Year of Diagnosis¹: Massachusetts, 2001–2010



¹ Reflects year of diagnosis for HIV infection among all individuals reported with HIV infection, with or without an AIDS diagnosis.

Individuals Diagnosed with HIV Infection by Exposure Mode and Year of Diagnosis: Massachusetts, 2001–2010



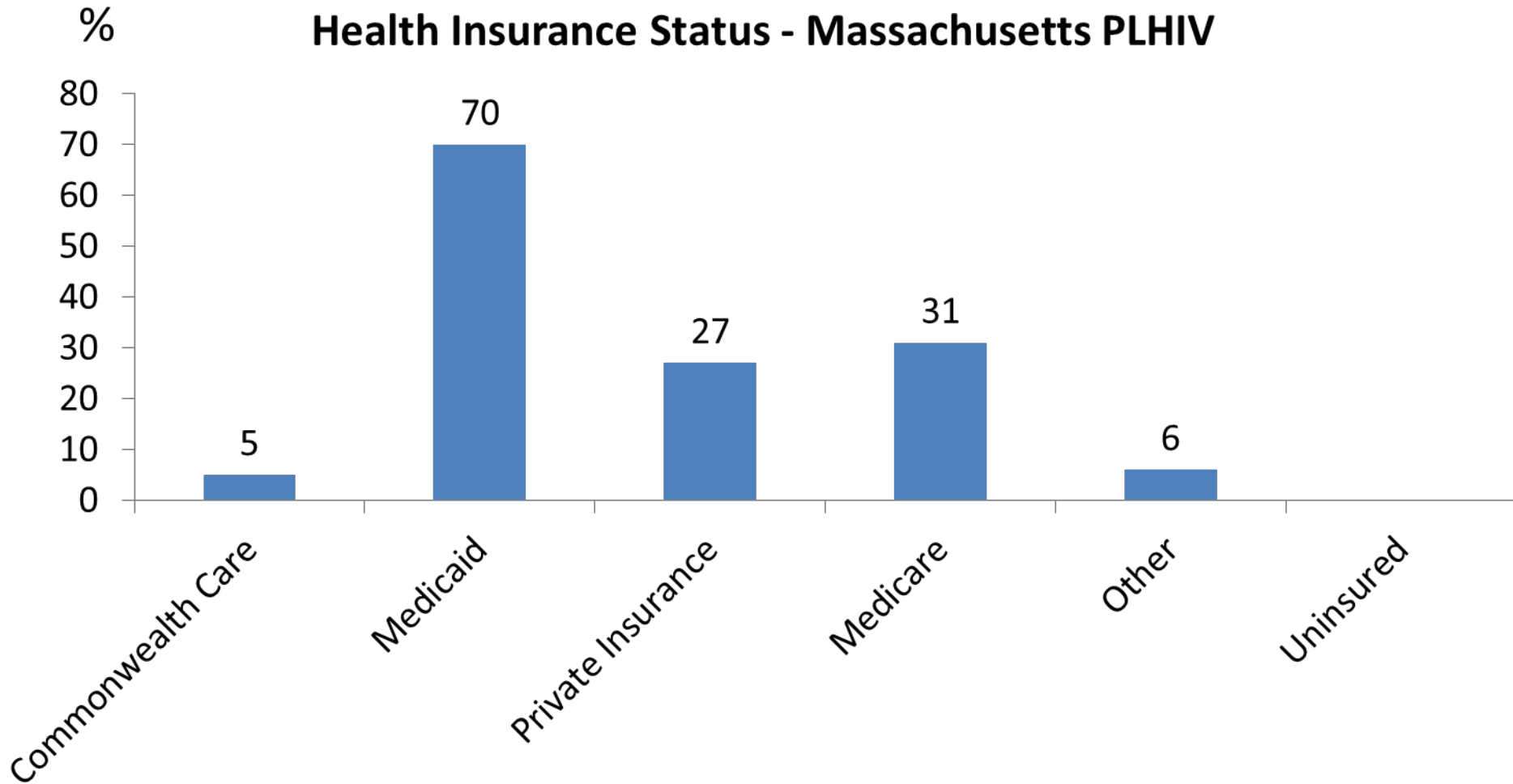
Trends in the Massachusetts Cascade

2004-2008

<u>Variable</u>	<u>2004</u>	<u>2008</u>
> 2 CD4 Counts 3mo apart	85%	87%
On ART per guidelines	94%	96%
Always virologically suppressed	58%	71%
Never virologically suppressed	14%	7%

- 13-20 clinics, sample 762-967/year
- Source: Kunches et al: HIV/AIDS Clinical Quality Assurance Project: Trends in Clinical Performance and Clinical Outcomes in Massachusetts, JSI/MDPH

Health Insurance Status - Massachusetts PLHIV



- Source: Massachusetts and Southern New Hampshire HIV/AIDS Consumer Study, JSI & MDPH, Zoll

HIV Testing Programs at Fenway Health, FY 2012

<u>1° Sponsor</u>	<u>Venue</u>		<u>N</u>	
All Sites		Diverse	7477	1.3%
Fenway Health	16 Haviland Drop-In	MSM	1498	1.8%
Fenway Health	Counselor referral	Diverse	2246	1.3%
Sidney Borum	Medical Dept.	Youth	652	.05%
MAC	Bars, Van, Pride	Black MSM	200	1.0%
MAC	Housing Project	Black/Latina women	75	2.0%
Fenway Med	1 ⁰ Provider	Diverse	2806	1.0%

Source: CDC and MDPH Data as Reported July 2011-June 2012

16 Haviland: “One stop shopping”

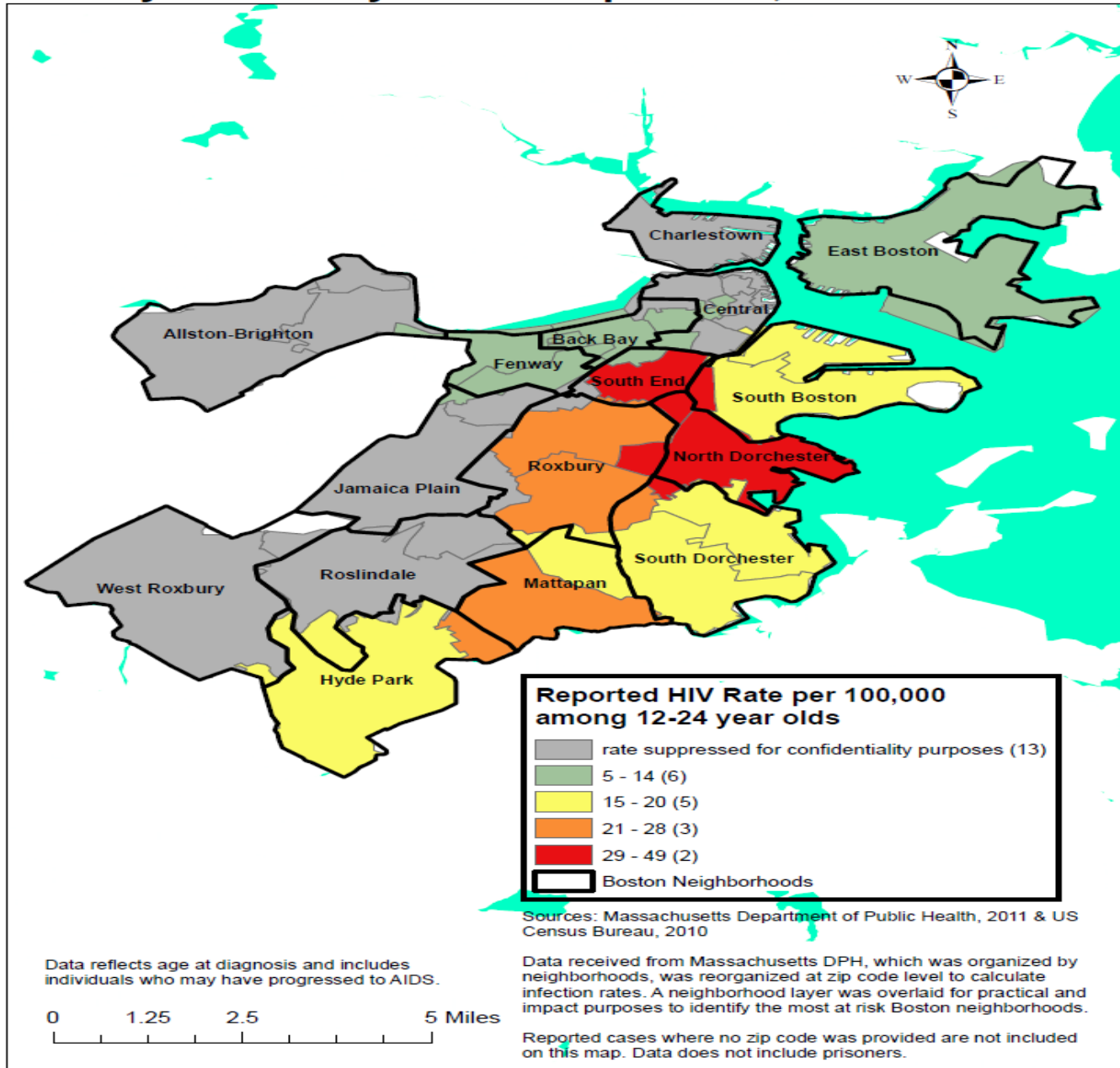
- HIV drop in services
- Referrals for STD screening and access to NPEP
- Referral for 1 medical care and behavioral health
- Referrals to CDC EBIs
- Peer health system navigators
- Partner notification services
- Referrals to biomedical and behavioral research studies



Local HIV Prevention Research

- PrEP: HPTN 069, NIMH R34
- Rectal Microbicides: MTN 017
- Preventive Vaccine: HVTN 505
- Black MSM: HPTN 061
- Life skills for transgender women (NIMH)
- Addressing CSA in HIV-infected MSM (NIMH)
- Home blood testing for high risk MSM (NIAID)
- Substance Use Interventions (NIDA):
 - Contingency management for stimulant users
 - Feasibility of PrEP for stimulant users
 - Brief intervention for HIV+ MSM (NIAAA)

Rate of Reported HIV Infection Incidence among 12-24 year olds by Boston Zip Codes, 2005-2009





**The End of AIDS in Communities of Color
Health Disparities, Hurdles and Hope:
Ending the HIV Epidemic in the U.S.**



November 5, 2012
4:00 – 7:00 pm

The Naismith Memorial Basketball Hall of Fame
1000 Hall Fame Avenue
Springfield, MA 01105



ARE YOU READY TO
THRIVE?

MORE THAN
1 IN 4 MEN
WHO HAVE SEX WITH MEN
HAVE EXPERIENCED
**CHILDHOOD
SEXUAL ABUSE.**

FENWAY  HEALTH



Fenway Health is looking for
YOUNG TRANS WOMEN
to take part in a research
study to improve health
and wellness.

You might be eligible to
participate if you are:

- A trans woman/On the MTF spectrum
- Age 16 to 24
- Sexually active

 THE FENWAY INSTITUTE



**THERE'S A NEW WAY
TO STAY SAFE WHILE
YOU'RE HAVING FUN.**

The FDA has approved a new once-a-day pill
that can reduce your HIV risk up to 90%.

Fenway Health wants to hear what you
think in a one-time survey.

If you are a HIV-negative man who has sex with men, you
could be eligible to take a one-time confidential survey
sharing your thoughts. Participants receive up to \$70
compensation and optional STI testing at the time of their
visit, which will last approximately two hours or less.

YOU MAY BE ELIGIBLE IF YOU:

- Are a man sexually active with other men
- Are HIV negative
- Have engaged in anal sex in the last
three months

For more information and to see if you may
be eligible for this research study, call or
text Fenway Health at 617.902.0429.

Boston/Mass Conclusions

- Secular trends suggest that HIV incidence is ↓
- Hard to disentangle single reason, but there is:
 1. Close coordination between MDPH/BPHC, community and academic stakeholders
 2. Supportive environment
 - State supplementation of ADAP
 - Marriage equality, early needle exchange
 3. Health Reform
 4. Research supports community ed/engagement

Continued close communication needed

Concerns about resources to sustain success

Thank You

The Fenway Institute

Rodney Vanderwarker

Chris Grasso

Steve Boswell

Jon Vincent

Matthew Mimiaga

MDPH Office of HIV/AIDS

Kevin Cranston

Dawn Fukuda

Maura Mimos

Barry Callis

Harvard CFAR

Mark Ingaciola

Wanda Allen

Bruce Walker

**NIAID, NIMH, NIDA, NICHD, CDC,
HRSA, MDPH,**

