

# DC CFAR ACADEMIC-COMMUNITY PARTNERSHIP AWARDS ORIENTATION

January 15, 2021



# Agenda

- Welcome from the Developmental Core Directors
- Introductions
- DC CFAR Overview
- Developmental Core Overview
- ACP Awards Details
- Questions

# DC Center for AIDS Research 2010-2020 (renewed to 2025!)

THE GEORGE  
WASHINGTON  
UNIVERSITY  
WASHINGTON, DC



DC | HEALTH

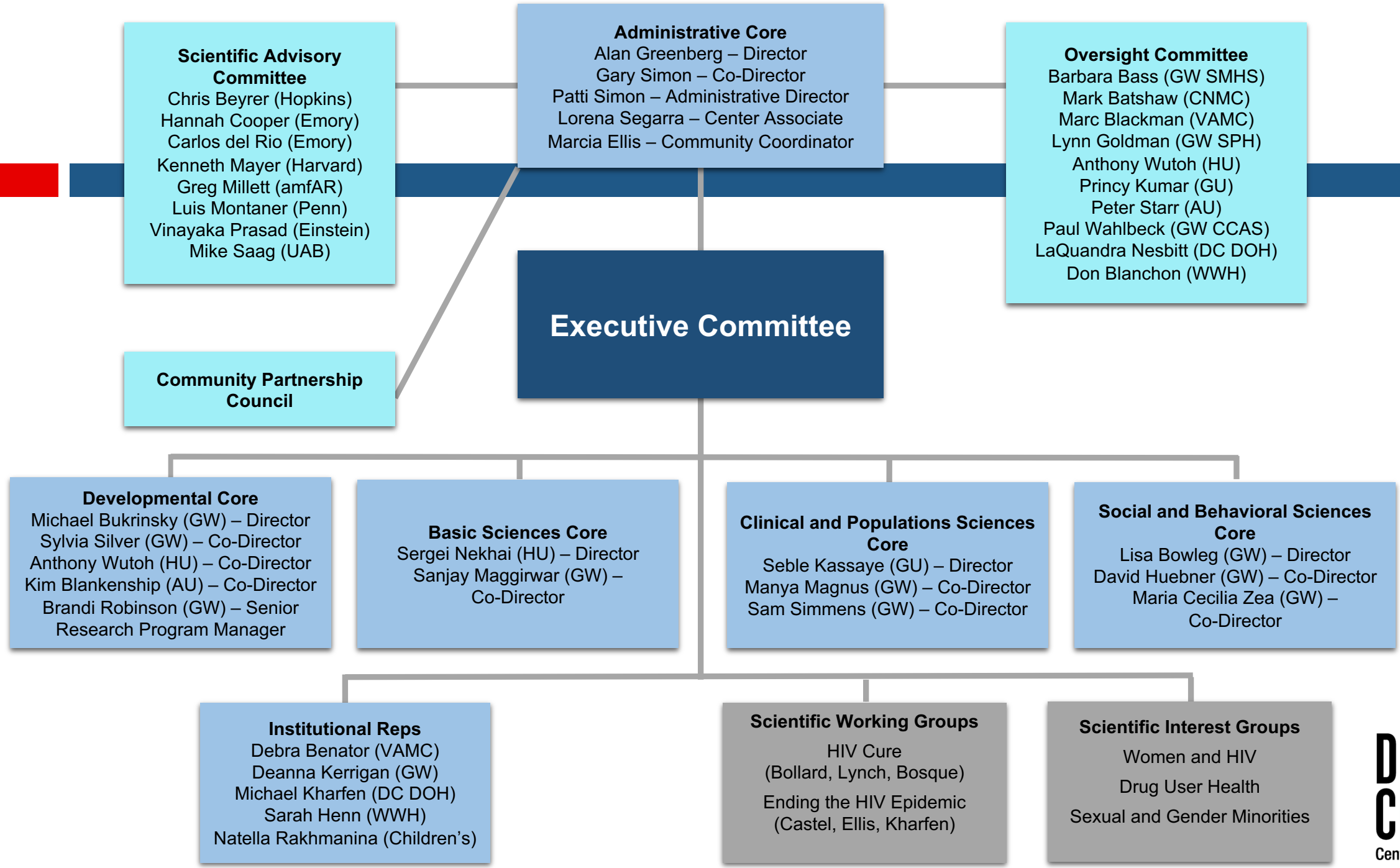


242 current members  
68 Pilot Awards for \$3M  
109 new HIV investigators recruited  
110 NIH HIV awards received  
Cumulative FRB of \$165M supported



# DC CFAR Mission and Specific Aims

- Mission: to intensify our multi-institutional effort to promote and support research that contributes to ending the HIV epidemic in Washington, DC and beyond in partnership with government and community.
- Specific Aims:
  - Providing scientific leadership and institutional infrastructure to advance HIV research among the eight collaborating DC CFAR institutions.
  - Stimulating and supporting innovative and consequential HIV research in the basic, clinical, prevention and social and behavioral sciences while promoting an interdisciplinary approach to addressing the NIH high priority scientific HIV focus areas.
  - Driving the development and recruitment of early stage, new, and women and minority HIV investigators.
  - Enhancing communication and fostering meaningful new collaborations between DC CFAR investigators and academic, government, community and clinical partners.



# DC CFAR Executive Committee

## Administrative

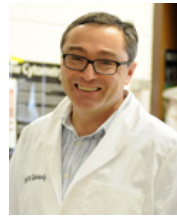


Alan Greenberg  
(GW) Director



Gary Simon  
(GW) Co-Director

## Developmental



Michael Bukrinsky  
(GW) Director



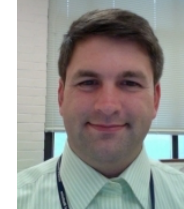
Sylvia Silver  
(GW) Co-Director



Anthony Wutoh  
(HU) Co-Director



Kim Blankenship  
(AU) Co-Director



Mark Burke  
(HU) Assoc. Director

## Basic Sciences



Sergei Nekhai  
(HU) Director



Sanjay Maggirwar  
(GW) Co-Director



Alberto Bosque  
(GW) Assoc. Director

## Clinical and Population Sciences



Seble Kassaye  
(GU) Director



Manya Magnus  
(GW) Co-Director



Sam Simmens  
(GW) Co-Director

## Social and Behavioral Sciences



Lisa Bowleg  
(GW) Director



Maria Cecilia Zea  
(GW) Co-Director



David Huebner  
(GW) Co-Director

## Institutional Representatives



Michael Kharfen  
(DC DOH)



Debra Benator  
(VAMC)



Natella Rakhmanina  
(Children's)



Sarah Henn  
(WWH)



Deanna Kerrigan  
(GW at-large)

## HIV Cure SWG



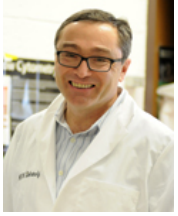
Cath Bollard  
(Children's) Director

## EHE SWG



Amanda Castel  
(GW) Director

# Developmental Core – Core B



Michael Bukrinsky  
(GW) Director



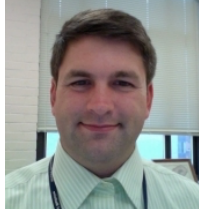
Sylvia Silver  
(GW) Co-Director



Anthony Wutoh  
(HU) Co-Director



Kim Blankenship  
(AU) Co-Director



Mark Burke  
(HU) Associate  
Director



Brandi Robinson  
(GW) Senior Research  
Program Manager

## Pilot Awards Program

- Early Stage Investigators awards – up to \$50K
- Transitioning Investigator awards – up to \$100K
- Competitive awards program
- Two cycles each year, spring and fall

## Microgrants

- Competitive, small grants, \$2,500 - \$5,000
- Core services (all CFAR investigators)
- Publication fees, poster printing, and travel to scientific conferences (pilot award and NIH supplement recipients)

## Mentoring Program

- Developing research ideas
- Implementing a research project
- Grant application and manuscript preparation

## Education and Training

- Grant writing workshops
- Research Seminars
- Journal Club Webinars
- Mixers

# Background

To provide pilot research funds to Co-Principal Investigator teams consisting of one early stage or new HIV/AIDS academic investigator and one community investigator to collect preliminary data that will lead to NIH funding in HIV/AIDS

- Request for Applications (RFA) will be released on January 26
- Awards up to \$50,000; CBO should receive a minimum of 50% of the requested funding
- Academic and community investigators should function as Co-Principal Investigators, sharing the responsibility for conducting the research and meeting regulatory and reporting requirements
- Scope includes basic, clinical, epidemiologic, social behavioral and prevention HIV/AIDS science
- Applications should focus on the NIH high priority HIV/AIDS research areas which broadly include: HIV cure research; reducing HIV/AIDS incidence; the next generation of HIV therapies; HIV-associated comorbidities, coinfections, and complications; and cross cutting areas of basic research and health inequities
- Proposals should directly address the Washington, DC population



# Community Investigator Eligibility

- Community investigators must
  - be community members of the DC CFAR. Applications for new membership will be accepted just prior to or at time of submission if the PI meets the eligibility criteria;
  - be affiliated with a community-based organization (CBO) that is eligible to serve as a recipient of federal funding; and
  - have demonstrable experience and expertise relevant to the HIV epidemic in DC
- CBOs must be located in the Washington, DC area

# Academic Investigator Eligibility

- Academic investigators must
  - have a faculty appointment at one of the DC CFAR partner institutions
  - have a terminal degree, and
  - be an early stage or new investigator who is eligible to submit NIH grant applications through their home institution's office of research

# Award Details

- Up to two ACP awards will be funded in the Spring 2021 cycle
- Awards will be made for a one-year period, with no-cost extensions considered for a maximum of one additional year
- Funds can be used for research-related activities and up to \$5,000 for each Co-PI can be requested for salary support
- Academic institutions and CBOs may be asked to provide financial and/or other pertinent information about their organizations prior to funding, such as audit reports and financial status documentation

# Timeline

<b>Procedure/Activity</b>	<b>Due Date</b>
Pre-submission Form	February 18, 2021
Specific Aims Review	Early March 2021
Consultation Call Completion	Late March 2021
Core Service Request	April 1, 2021
Full Application	April 14, 2021
Application Review	April/May 2021
Anticipated Project Start	June 1, 2021

# Application Process Procedures

- *Pre-submission* – notifies the DC CFAR that you intend to apply (Feb 18)
- *Consultation call* – one-hour conference call with select members of senior DC CFAR leadership based on the proposed scope of work (Feb/March)
- *Specific aims review* – present and receive feedback on one of the most important and often most difficult parts of the application to articulate (March)
- *Mentors* – provide scientific and grant writing guidance through the application development process, for the duration of the study, and beyond
- *Core Services* – applicants are strongly encouraged to utilize DC CFAR Core services in their proposed research projects (April 1)
- *Review* – applications will be reviewed by a DC CFAR Scientific Review Committee composed of both academic and community reviewers (April/May)

# Core Services

## Basic Sciences Core

Provides a wide range of virologic, molecular, immunological and imaging laboratory services and training.

## Clinical and Population Sciences Core

Provides clinical, epidemiologic and biostatistical services; recruitment and retention consultation and support; and access to biological samples and clinical databases from new and existing studies and networks.

## Social and Behavioral Sciences Core

Provides a range of services to provide support on the concepts, theories, methods and methodologies in the social and behavioral sciences relevant to HIV/AIDS.

# Application Review Criteria and Process

- Reviewers will assess the scientific merit of the applications using the following [NIH criteria](#): overall impact, significance, investigators, innovation, approach, and environment. Community impact is an added criterion.
- The Developmental Core will make funding recommendations to the DC CFAR Executive Committee based largely on the scientific merit review while also considering important programmatic factors such as research focus area, strength of plan for future NIH funding, priority group status of PIs, proposed use of Core services, and potential for community impact.

# Key Application Components

- Lay project summary
- Detailed budgets and justifications
- NIH Biosketches
- Resources
- Specific Aims
- Research Plan
- References
- Letters of support
- [Subrecipient Commitment Form](#)



# Funding Requirements

- Ongoing consultation with Primary Mentor
- Regulatory approval if projects involve human participants and/or vertebrate animals
- NIH approval if projects involve vulnerable populations
- Progress reports
- Presentations at DC CFAR seminars

# Regulatory Approvals - IRB

Institutional Review Board (IRB) review and approval will be required before you can begin your project if it involves human participants

## Human Subjects Research

Research involving a living individual about whom data or biospecimens are obtained/used/studied/analyzed through interaction/intervention, or identifiable, private information is used/studied/analyzed/generated

### Examples of human subjects research include:

- Collecting blood
- Administering medicine
- Collecting data
- Conducting a survey
- Interviewing
- Conducting a focus group
- Changing participants' environment
- Administering a psychological test
- Testing a new educational technique

An IRB is a group that has been formally designated to review and monitor research involving human participants. This group review serves an important role in the protection of the rights and welfare of human research subjects. IRBs review research protocols and related materials (e.g., informed consent documents and investigator brochures).

# Regulatory Approvals - IACUC

Investigators must obtain Institutional Animal Care and Use Committee (IACUC) approval prior to using vertebrate animals in research and must adhere to the approved protocol in carrying out their activities.

- Nonhuman primates, such as monkeys, marmosets, and baboons
- Large animals, such as cats, dogs, and pigs
- Rabbits
- Rodents, such as hamsters, rats, and mice
- Non-mammalian vertebrates, such as poultry, reptiles, and fish

An IACUC is a group that has been formally designated to review and monitor research involving animals. This group ensures the proper care and treatment of animals being used in research. IACUCs review research protocols and related materials before granting approval to investigators.

**QUESTIONS?**