

# **DC CENTER FOR AIDS RESEARCH PILOT AWARDS 101**

August 6, 2021

# Welcome and agenda

- **Welcome & Introductions**
- **DC CFAR Overview**
- **Pilot Awards Program Overview**
- **Pilot Awardee Presentation** - Sarah Calabrese, Assistant Professor of the Department of Psychological and Brain Sciences at George Washington University
- **Open Discussion & Questions**
- **Closing at 1:30 PM**

# INTRODUCTIONS

# OVERVIEW OF THE DC CFAR

# NIH-Funded Centers for AIDS Research in the US



Network of 17 CFARs in the U.S. that address the NIH CFAR mission of supporting “a multi-disciplinary environment that promotes basic, clinical, epidemiologic, behavioral, and translational research in the prevention, detection, and treatment of HIV infection and AIDS.”

# DC CFAR Mission and Specific Aims

- **Mission:** to intensify our multi-institutional effort to promote and support research that contributes to ending the HIV epidemic in Washington, DC and beyond in partnership with government and community.
- **Specific Aims:**
  - Providing scientific leadership and institutional infrastructure to advance HIV research among the eight collaborating DC CFAR institutions.
  - Stimulating and supporting innovative and consequential HIV research in the basic, clinical, prevention and social and behavioral sciences while promoting an interdisciplinary approach to addressing the NIH high priority scientific HIV focus areas.
  - Driving the development and recruitment of early stage, new, and women and minority HIV investigators.
  - Enhancing communication and fostering meaningful new collaborations between DC CFAR investigators and academic, government, community and clinical partners.

# DC Center for AIDS Research 2010-2021

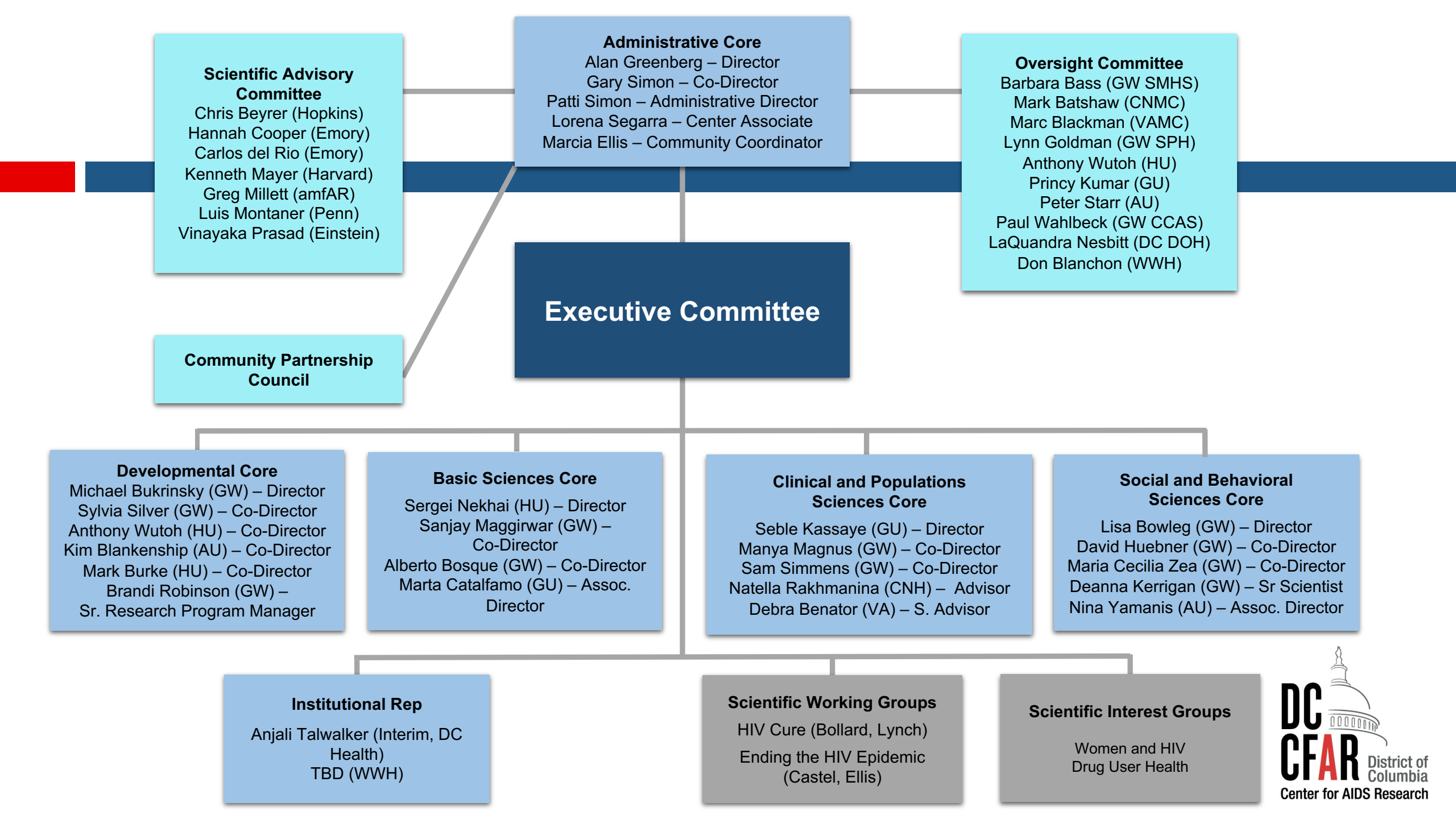
**Mission:** Intensify our multi-institutional effort to support research that contributes to ending the HIV epidemic in Washington, DC and beyond in partnership with government and community.

THE GEORGE  
WASHINGTON  
UNIVERSITY  
WASHINGTON, DC



260 current members  
76 pilot awards for \$3.2M  
22 supplemental awards for \$7.1M (5 pending for > \$4M)  
110 new HIV investigators recruited  
112 NIH HIV awards received  
Cumulative FRB of \$190M supported







# DC CFAR Executive Committee

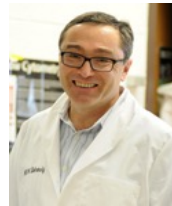
## Administrative



Alan Greenberg  
(GW) Director



Gary Simon  
(GW) Co-Director



Michael Bukrinsky  
(GW) Director



Sylvia Silver  
(GW) Co-Director



Anthony Wutoh  
(HU) Co-Director



Kim Blankenship  
(AU) Co-Director



Mark Burke  
(HU) Co-Director

## Interim Institutional Rep



Anjali Talwalker  
(DC Health)

## Basic Sciences



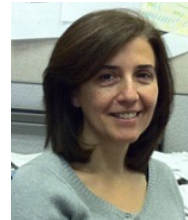
Sergei Nekhai  
(HU) Director



Sanjay Maggirwar  
(GW) Co-Director



Alberto Bosque  
(GW) Co-Director



Marta Catalfamo  
(GU) Assoc. Director

## Clinical and Population Sciences



Seble Kassaye  
(GU) Director



Manya Magnus  
(GW) Co-Director



Sam Simmens  
(GW) Co-Director



Natella Rakhmanina  
(CN) Scientific  
Advisor



Debra Benator  
(VA) Scientific  
Advisor

## Social and Behavioral Sciences



Lisa Bowleg  
(GW) Director



Maria Cecilia Zea  
(GW) Co-Director



David Huebner  
(GW) Co-Director



Nina Yamanis  
(AU) Assoc. Director



Deanna Kerrigan  
(GW) Sr. Scientist

## HIV Cure SWG



Cath Bollard  
(CN) Lead



Rebecca Lynch  
(GW) Co-Lead

## EHE SWG



Amanda Castel  
(GW) Lead

# Major DC CFAR Activities

- Stimulate and support research in **NIH HIV Research Priority Areas**
- **Pilot Awards and Mentoring Programs** for early stage and new investigators
- **Core services** - lab, clinical, epidemiology, biostatistics, and behavioral
- Encourage and support **recruitment** of HIV investigators to DC
- Support of multi-institutional **NIH grant applications**
- **Tracking** of services, grants and publications
- Promote **community-engaged research**
- Citywide and Core/SWG **seminars and symposia**
- **Website, Social Media and Weekly Update**

# Administrative Core – Core A



Alan Greenberg  
(GW) Director



Gary Simon  
(GW) Co-Director



Patti Simon  
Administrative  
Director



Lorena Segarra  
Center  
Associate



Marcia Ellis  
Community  
Coordinator



Cara Thompson  
Program  
Assistant

## Leadership and governance

- Greenberg (PI)
- Strategic planning and decision-making
- Convenes EC, OC, SAC and CPC meetings
- Leads/supports recruitment efforts

## Multi-disciplinary science

- Organize citywide events, SWGs, SIGs and Inter-CFAR activities

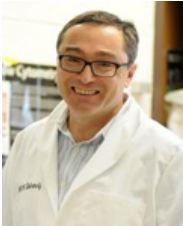
## Administrative oversight and fiscal management

- Grants awarded to/managed within Core A
- Creates overall annual budgets (in consultation with the Cores)
- Issues sub-awards

## Collaboration and communication

- Promote scientific programming
- NIH program officers and NIH grants management
- CFAR institutions' business offices
- Website, Weekly Update, Social Media and Special Announcements

# Developmental Core – Core B



Michael Bukrinsky  
(GW) Director



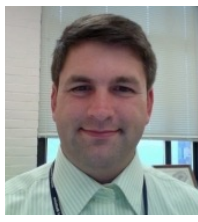
Sylvia Silver  
(GW) Co-Director



Anthony Wutoh  
(HU) Co-Director



Kim Blankenship  
(AU) Co-Director



Mark Burke  
(HU) Co-Director



Brandi Robinson  
(GW) Senior Research  
Program Manager



Vivian Kirkham  
(GW) Developmental  
Core Manager

## Core Objectives & Aims

- To promote and support innovative, collaborative and multidisciplinary HIV research that is pertinent to the epidemic in Washington, DC
- To lead a dynamic mentoring program for early stage and transitioning HIV investigators with an emphasis on women and underrepresented minorities
- To provide educational and networking activities that promote multidisciplinary and cross-institutional collaboration in HIV research

## Pilot Awards Program

- Early Stage and New Investigators awards – up to \$50K
- Competitive awards program
- Two cycles each year, spring and fall

## Microgrants

- Competitive, small grants, \$2,500 - \$5,000
- Core services (all CFAR investigators)
- Publication fees, poster printing, travel to scientific conferences (pilot award and NIH supplement recipients)

## Mentoring Program

- Developing research ideas
- Implementing a research project
- Grant application and manuscript preparation

## Education and Training

- Grant writing workshops
- Research Seminars
- Journal Club Webinars
- Mixers



# Basic Sciences Core – Core C



Sergei Nekhai  
(HU) Director



Sanjay Maggirwar (GW)  
Co-Director



Alberto Bosque (GW)  
Co-Director



Marta Catalfamo  
(GU) Assoc. Director



Cara Thompson (GW)  
Core Manager

## High impact laboratory services

- Virologic and molecular services
- Immunological services
- Sequencing services
- Imaging services

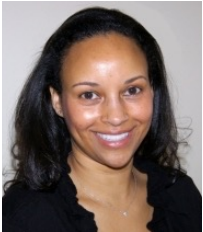
## Training to investigators in techniques and assays

- Core Providers Day
- Lab Open Houses
- Resources for training opportunities

## Consultations

- Manuscript preparation
- Grant application support

# Clinical and Population Sciences Core – Core D



Seble Kassaye  
(GU) Director



Manya Magnus  
(GW) Co-Director



Sam Simmens  
(GW) Co-Director



Lari Warren-Jeanpiere (GU)  
Core Manager

## Comprehensive clinical, epidemiological, and biostatistical research services

- Consultations
- Manuscript preparation
- Study design
- Biostatistical analysis

## Access to longitudinal HIV Cohorts for research and collaborations

- DC Cohort
- MACS-WIHS Combined Cohort Study (MWCCS)
- Seronegative Cohort (new)

# Social and Behavioral Sciences Core – Core E



Lisa Bowleg (GW)  
Director



Maria Cecilia Zea (GW)  
Co-Director



David Huebner (GW)  
Co-Director



Nina Yamanis  
(AU) Assoc. Director



Allison O'Rourke (GW)  
Core Manager

## Services supporting development of new grant applications

- Peer review sessions
- Consultations
- Statistical analysis
- Manuscript preparation

## Networking and building collaborations

- Mixers, mini-conferences, virtual coffee hours

## Education, training, and resources

- Social and Behavioral Instruments (SABI) database

## Community-engaged research

- Best practices for researcher-community collaboration and disseminating results

# Community Partnership Council (CPC)



Marcia Ellis  
Community  
Coordinator

- Community Partnership Council (formerly the Community Advisory Board)
  - Prominent members and leaders of the DC HIV community
  - Leaders of various DC HIV community-based organizations (CBOs)
  - Representatives of the HIV research CABs of DC CFAR institutions
- The CPC's active participation is one of the hallmarks of the DC CFAR
  - Participate in DC CFAR CPC meetings
  - Review and provide input on articles and publications
  - Review pilot award applications
  - Participate in pilot award consultation calls
  - Review and provide input on research applications
  - Participate in and present at meetings and conferences
  - Assist in the implementation of research studies
  - Engage with community on CPC and related activities
  - Provide the unique perspective of the various communities represented on the CPC

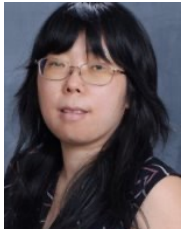


# OVERVIEW OF PILOT AWARDS PROGRAM

# Pilot Awards Program

- Aims to provide pilot funds on a competitive basis to HIV/AIDS investigators to assist them in the development of their NIH-funded research careers
  - Scope includes basic, clinical, epidemiologic, social behavioral, and prevention HIV/AIDS science
  - Two RFA cycles per year – Spring & Fall; typically award 7-8 per year
  - Awards up to \$50,000
  - Faculty investigators at 8 participating DC CFAR institutions are eligible to apply as PI
  - The funds are provided to support early stage or new/transitioning investigators, with an emphasis on women and underrepresented minorities
  - Applications reviewed by 3 peer reviewers and 1 CPC member
- RFA to be released in mid-August
  - Pre-submission is required to submit a full application
  - Strongly encourage applications that focus on the DC CFAR priorities of Women & HIV; HIV Cure Research; Ending the HIV Epidemic; Drug User Health
  - Applications also strongly encouraged with other large NIH-funded HIV studies in DC including the Multicenter AIDS Cohort Study/Women's Interagency HIV Study Combined Cohort Study (MACS/WIHS CCS), and the DC Cohort
  - 1 ½ day grant writing workshop scheduled for September 23 & 24

# Recent Pilot Award Recipients



**Yan Wang, George Washington University; Spring 2021**

*Substance use, mental health problems and HIV outcomes among female sex workers*



**Ruth Kanthula, Georgetown University; Fall 2020**

*Prevalence of subclinical atherosclerosis among female adolescent and young adults with perinatally acquired HIV infection*



**Chul Kim, Georgetown University; Fall 2020**

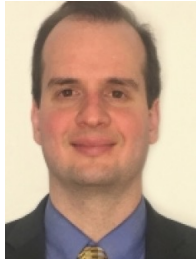
*Evaluation of immune microenvironment in patients with non-small-cell lung cancer and HIV infection*



**Ana Maria del-Rio Gonzalez, George Washington University; Fall 2019**

*Feasibility of "On Demand" PrEP among Latina Immigrant Transgender Women in the DMV Area*

# Recent Award Recipients New to HIV



**Alexander Zestos, American University;  
Spring 2021**

*Assessments of potential impacts of cognitive deficits on drug use and their implications for HIV intravenous drug users*



**Mark Laubach, American University;  
Spring 2021**

*Effects of HIV1 Tat and Antiretroviral Therapy on the Rodent Frontal Cortex*



**Thomas Heinbockel, Howard University;  
Fall 2020**

*HIV Tat Protein in CB1 Receptor-Mediated Signaling in Central Olfactory Circuits*

**Patrick Forcelli, Georgetown University;  
Spring 2019**

*Impact of SIV/SHIV infection and ART therapy on brain structure and connectivity in infants*



**Marjorie Gondre-Lewis, Howard University; Fall 2018**

*Linking Genetic Risk for Addiction and HIV Pathology*



# DC CFAR Pilot Award Experience – Sarah Calabrese, PhD

- **2017 Pilot Award:** *Optimizing PrEP Social Marketing to Black MSM in DC to Raise Awareness and Uptake*
  - PI: S. K. Calabrese
  - Co-Is: M. C. Zea, M. Magnus, V. Patel, J. F. Dovidio, M. Kharfen
- **Application Process**
  - Supportive
    - Developmental core consultation
    - Stats consultation
  - Comprehensive
    - Practice writing NIH R-series grant app
- **Implementation Process**
  - Presentation to/feedback from Executive Committee
  - Responsive and resourceful when (numerous) roadblocks encountered

# DC CFAR Pilot Award Experience

- **Outcomes**

- **Academic Presentations**

- Boone, C.A.†, Modrakovic, D.†, Rao, S.†, Galvao, R., Kalwicz, D.†, Wilbourn, B.†, Patel, V., Zea, M.C., Dovidio, J., Kharfen, M., Magnus, M., Poppen, P.J., Yeung, E.W., Bowleg, L., Calabrese, S.K., Factors associated with Black MSM's participation in biomedical HIV research, Biomedical HIV Prevention Summit, 2020 Dec, [virtual conference].
    - Calabrese, S.K., Dovidio, J.F., Patel, V.V., Modrakovic, D.†, Boone, C.A.†, Galvao, R.W., Rao, S.†, Kalwicz, D.†, Wilbourn, B.†, Kharfen, M., Magnus, M., & Zea, M.C., The stigmatizing effect of “targeting” US Black men who have sex with men in the social marketing of PrEP: A mixed methods study, XXIII International AIDS Conference, 2020 Jul, [virtual conference].

- **Non-Academic Presentations**

- Calabrese, S.K., Online Survey Data Collection: Lessons Learned and Recommendations, Adelante Scholars Webinar, Washington, DC [virtual], 2020 Jul
      - Also presented at DC CFAR Social and Behavioral Sciences Coffee Hour
    - Calabrese, S.K., Targeted Social Marketing of PrEP May Inadvertently Perpetuate Stigma, AIDS Foundation. Chicago, Chicago, IL, Chicago, IL [virtual], 2020 Oct

- **Manuscripts in Preparation**

- Calabrese, S.K., Dovidio, J.F., Patel, V.V., Modrakovic, D.†, Boone, C.A.†, Galvao, R.W., Rao, S.†, Kalwicz, D.†, Wilbourn, B.†, Kharfen, M., Magnus, M., & Zea, M.C., The stigmatizing effect of “targeting” US Black men who have sex with men in the social marketing of PrEP: A mixed methods study.
    - Modrakovic, D.†... Calabrese, S.K. Dissecting the onion: Identifying and remediating issues surrounding data validity in online survey research

- **Pilot Data and Methodological Wisdom for NIH R01 App**

† Student/Mentee

# Other DC CFAR Experience

- **Involvement**

- Sexual and Gender Minority Scientific Working Group
- Social and Behavioral Sciences Core
- Pilot grant peer review

- **Consultations**

- Grant
- Statistics

- **Didactic Opportunities**

- Seminars, conferences, etc.

- **Funding Opportunities**

- Administrative supplement award

- **Networking**

- Local research resources (e.g., DC Cohort)
- New collaborations



**QUESTIONS?**



# CONTACT US!

Michael Bukrinsky [mbukrins@gwu.edu](mailto:mbukrins@gwu.edu)  
Sylvia Silver [ssilver@email.gwu.edu](mailto:ssilver@email.gwu.edu)  
Anthony Wutoh [awutoh@howard.edu](mailto:awutoh@howard.edu)  
Mark Burke [mark.burke@howard.edu](mailto:mark.burke@howard.edu)  
Kim Blankenship [blankens@american.edu](mailto:blankens@american.edu)

Brandi Robinson [bnrobin@email.gwu.edu](mailto:bnrobin@email.gwu.edu)  
Vivian Kirkham [vkirkham@email.gwu.edu](mailto:vkirkham@email.gwu.edu)  
Sarah Calabrese [skcalabrese@gwu.edu](mailto:skcalabrese@gwu.edu)