

DC CENTER FOR AIDS RESEARCH PILOT AWARDS 101

August 5, 2022

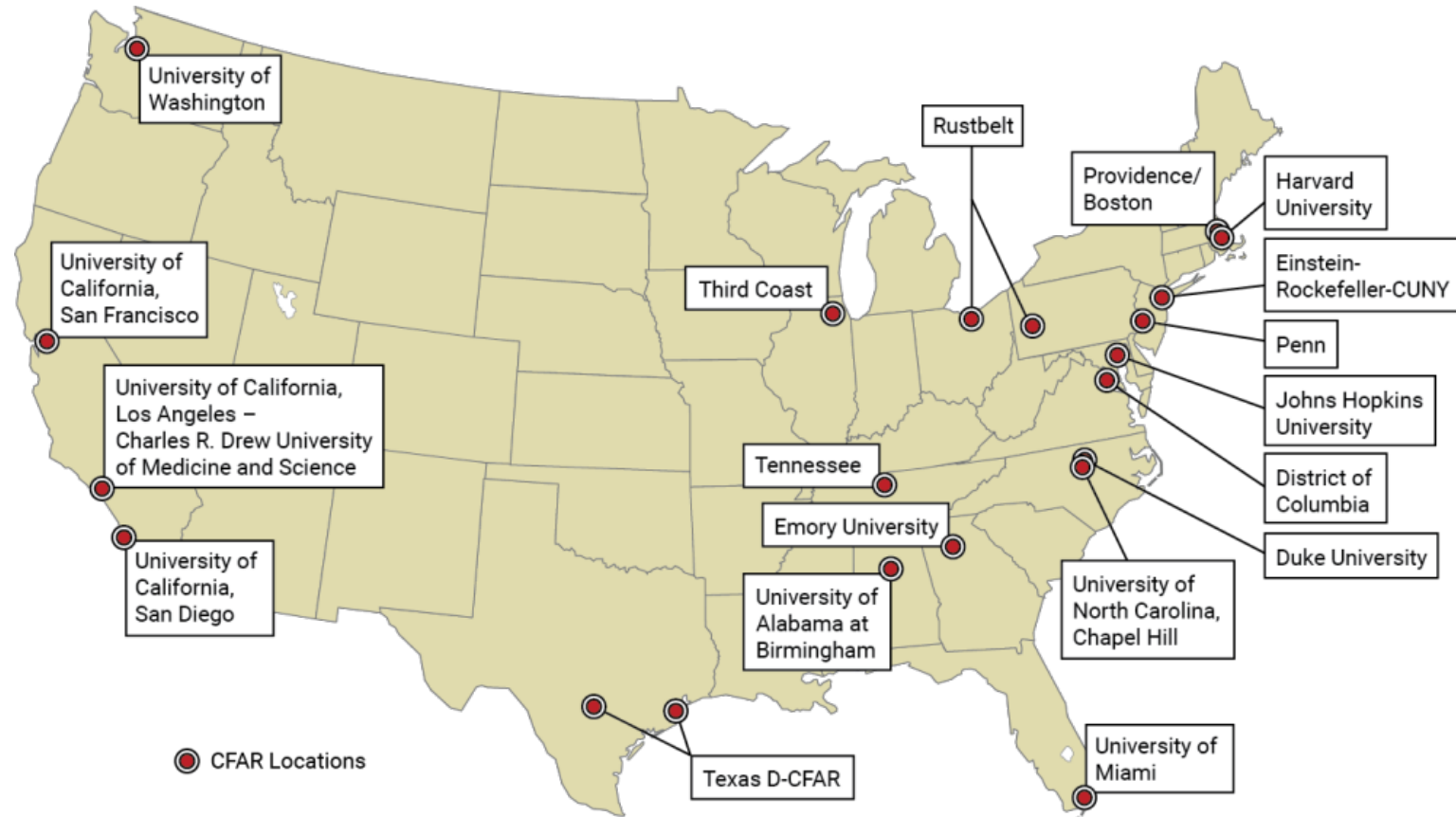
Welcome and agenda

- **Welcome & Introductions**
- **DC CFAR Overview**
- **Pilot Awards Program Overview**
- **Open Discussion & Questions**
- **Closing at 1:00 PM**

INTRODUCTIONS

OVERVIEW OF THE DC CFAR

NIH-Funded Centers for AIDS Research in the US



Network of 19 CFARs in the U.S. that address the NIH CFAR mission of supporting “a multi-disciplinary environment that promotes basic, clinical, epidemiologic, behavioral, and translational research in the prevention, detection, and treatment of HIV infection and AIDS.”

DC CFAR Mission and Specific Aims

- **Mission:** to intensify our multi-institutional effort to promote and support research that contributes to ending the HIV epidemic in Washington, DC and beyond in partnership with government and community.
- **Specific Aims:**
 - Providing scientific leadership and institutional infrastructure to advance HIV research among the eight collaborating DC CFAR institutions.
 - Stimulating and supporting innovative and consequential HIV research in the basic, clinical, prevention and social and behavioral sciences while promoting an interdisciplinary approach to addressing the NIH high priority scientific HIV focus areas.
 - Driving the development and recruitment of early stage, new, and women and minority HIV investigators.
 - Enhancing communication and fostering meaningful new collaborations between DC CFAR investigators and academic, government, community and clinical partners.

DC Center for AIDS Research 2010-2022

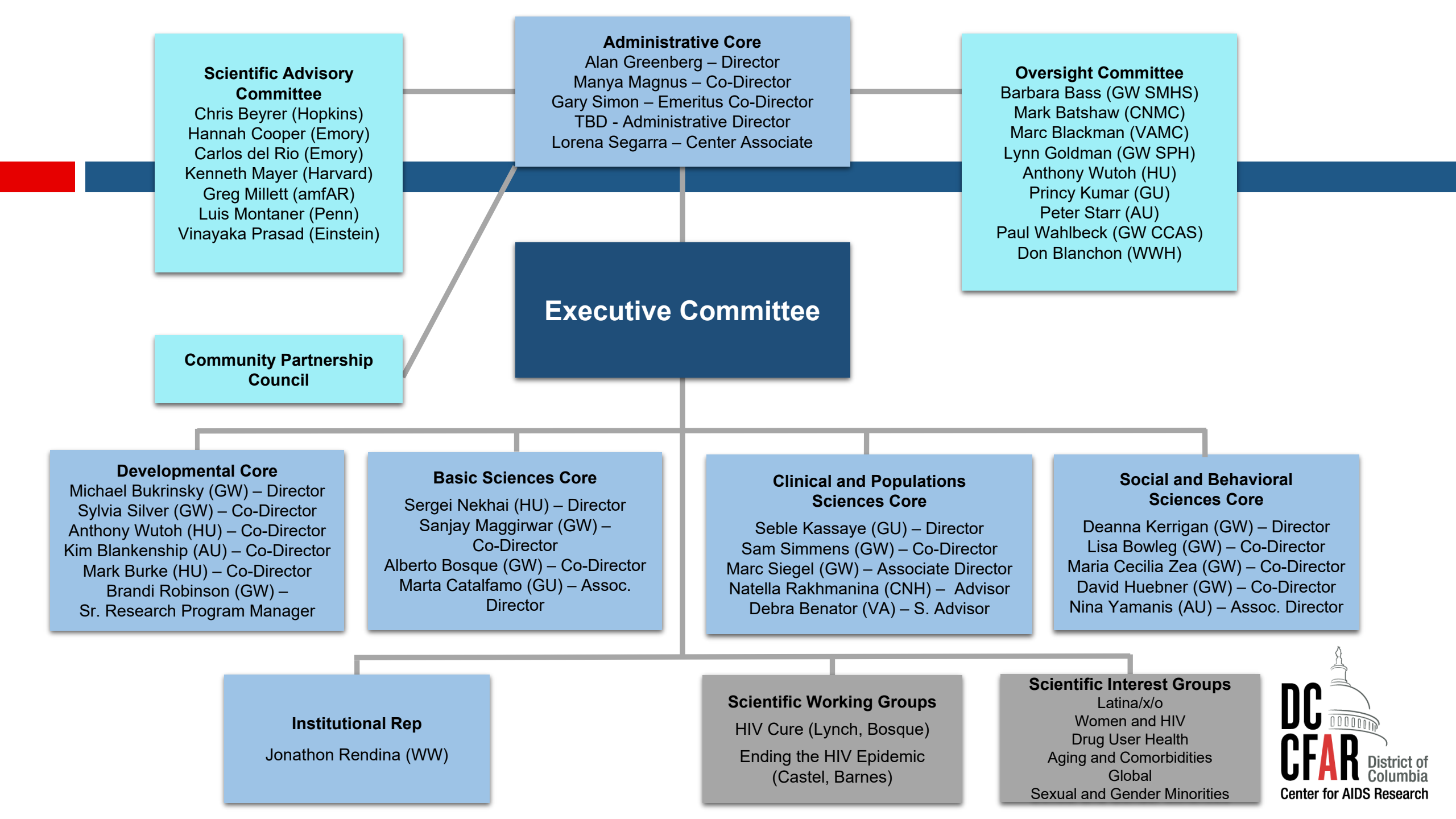
Mission: Intensify our multi-institutional effort to support research that contributes to ending the HIV epidemic in Washington, DC and beyond in partnership with government and community.

THE GEORGE
WASHINGTON
UNIVERSITY
WASHINGTON, DC



265 current members
77 pilot awards for \$3.2M
29 supplemental awards for \$11.6M
127 new HIV investigators recruited
131 NIH HIV awards received
Cumulative FRB of \$190M supported





DC CFAR Executive Committee

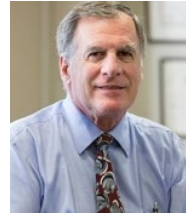
Administrative



Alan Greenberg
(GW) Director



Manya Magnus
(GW) Co-Director



Gary Simon
Co-Director Emeritus



Michael Bukrinsky
(GW) Director



Sylvia Silver
(GW) Co-Director



Anthony Wutoh
(HU) Co-Director



Kim Blankenship
(AU) Co-Director



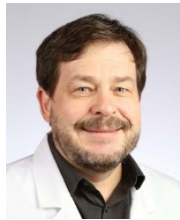
Mark Burke
(HU) Co-Director

Inst. Representative



Jonathon Rendina (WW)

Basic Sciences



Sergei Nekhai
(HU) Director



Sanjay Maggirwar
(GW) Co-Director



Alberto Bosque
(GW) Co-Director



Marta Catalfamo
(GU) Assoc. Director

Clinical and Population Sciences



Seble Kassaye
(GU) Director



Sam Simmens
(GW) Co-Director



Marc Siegel (GW)
Assoc. Director



Natella Rakhmanina
(CN) Scientific
Advisor



Debra Benator
(VA) Scientific
Advisor

Social and Behavioral Sciences



Deanna Kerrigan
(GW) Director



Maria Cecilia Zea
(GW) Co-Director



Lisa Bowleg
(GW) Co-Director



David Huebner
(GW) Co-Director



Nina Yamanis
(AU) Assoc. Director

HIV Cure SWG



Rebecca Lynch
(GW) Lead



Alberto Bosque
(GW) Co-Lead

EHE SWG



Amanda Castel
(GW) Lead



Clover Barnes
(DC Health) Co-Lead

Major DC CFAR Activities

- Stimulate and support research in **NIH HIV Research Priority Areas**
- **Pilot Awards and Mentoring Programs** for early stage and new investigators
- **Core services** - lab, clinical, epidemiology, biostatistics, and behavioral
- Encourage and support **recruitment** of HIV investigators to DC
- Support of multi-institutional **NIH grant applications**
- **Tracking** of services, grants and publications
- Promote **community-engaged research**
- Citywide and Core/SWG **seminars and symposia**
- **Website, Social Media and Weekly Update**

Administrative Core – Core A



Alan Greenberg
(GW) Director



Manya Magnus
(GW) Co-Director



TBD –
Administrative
Director



Lorena Segarra
(GW) Center
Associate



Vivian Kirkham
(GW) Program
Assistant

Leadership and governance

- Greenberg (PI)
- Strategic planning and decision-making
- Convenes EC, OC, SAC and CPC meetings
- Leads/supports recruitment efforts

Multi-disciplinary science

- Organize citywide events, SWGs, SIGs and Inter-CFAR activities

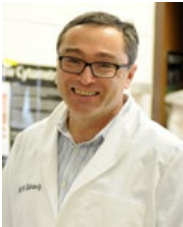
Administrative oversight and fiscal management

- Grants awarded to/managed within Core A
- Creates overall annual budgets (in consultation with the Cores)
- Issues sub-awards

Collaboration and communication

- Promote scientific programming
- NIH program officers and NIH grants management
- CFAR institutions' business offices
- Website, Weekly Update, Social Media and Special Announcements

Developmental Core – Core B



Michael Bukrinsky
(GW) Director



Sylvia Silver
(GW) Co-Director



Anthony Wutoh
(HU) Co-Director



Kim Blankenship
(AU) Co-Director



Mark Burke
(HU) Co-Director



Brandi Robinson
(GW) Senior Research
Program Manager



Vivian Kirkham
(GW) Core Manager

Core Objectives & Aims

- To promote and support innovative, collaborative and multidisciplinary HIV research that is pertinent to the epidemic in Washington, DC
- To lead a dynamic mentoring program for early stage and transitioning HIV investigators with an emphasis on women and underrepresented minorities
- To provide educational and networking activities that promote multidisciplinary and cross-institutional collaboration in HIV research

Pilot Awards Program

- Early Stage and New Investigators awards – up to \$50K
- Competitive awards program
- Two cycles each year, spring and fall

Microgrants

- Competitive, small grants, \$2,500 - \$5,000
- Core services (all CFAR investigators)
- Publication fees, poster printing, travel to scientific conferences (pilot award and NIH supplement recipients)

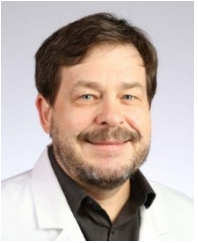
Mentoring Program

- Developing research ideas
- Implementing a research project
- Grant application and manuscript preparation

Education and Training

- Grant writing workshops
- Research Seminars
- Journal Club Webinars
- Mixers

Basic Sciences Core – Core C



Sergei Nekhai (HU) Director



Sanjay Maggirwar (GW) Co-Director



Alberto Bosque (GW) Co-Director



Marta Catalfamo (GU) Assoc. Director



Vivian Kirkham (GW) Core Manager

High impact laboratory services

- Virologic and molecular services
- Immunological services
- Sequencing services
- Imaging services

Training to investigators in techniques and assays

- Core Providers Day
- Lab Open Houses
- Resources for training opportunities

Consultations

- Manuscript preparation
- Grant application support

Clinical and Population Sciences Core – Core D



Seble Kassaye
(GU) Director



Sam Simmens
(GW) Co-Director



Marc Siegel
(GW) Assoc. Director



Vivian Kirkham (GW)
Core Manager

Comprehensive clinical, epidemiological, and biostatistical research services

- Consultations
- Manuscript preparation
- Study design
- Biostatistical analysis

Access to longitudinal HIV Cohorts for research and collaborations

- DC Cohort
- MACS-WIHS Combined Cohort Study (MWCCS)
- Seronegative Cohort (new)

Social and Behavioral Sciences Core – Core E



Deanna Kerrigan
(GW) Director



Lisa Bowleg (GW)
Co-Director



Maria Cecilia Zea (GW)
Co-Director



David Huebner (GW)
Co- Director



Nina Yamanis
(AU) Assoc. Director



Allison O'Rourke (GW)
Core Manager

Services supporting development of new grant applications

- Peer review sessions
- Consultations
- Statistical analysis
- Manuscript preparation

Networking and building collaborations

- Mixers, mini-conferences, virtual coffee hours

Education, training, and resources

- Social and Behavioral Instruments (SABI) database

Community-engaged research

- Best practices for researcher-community collaboration and disseminating results

Community Partnership Council (CPC)



George Kerr
CPC Chair

- Community Partnership Council (formerly the Community Advisory Board)
 - Prominent members and leaders of the DC HIV community
 - Leaders of various DC HIV community-based organizations (CBOs)
 - Representatives of the HIV research CABs of DC CFAR institutions
- The CPC's active participation is one of the hallmarks of the DC CFAR
 - Participate in DC CFAR CPC meetings
 - Review and provide input on articles and publications
 - Review pilot award applications
 - Participate in pilot award consultation calls
 - Review and provide input on research applications
 - Participate in and present at meetings and conferences
 - Assist in the implementation of research studies
 - Engage with community on CPC and related activities
 - Provide the unique perspective of the various communities represented on the CPC

OVERVIEW OF PILOT AWARDS PROGRAM

Pilot Awards Program

- Aims to provide pilot funds on a competitive basis to HIV/AIDS investigators to assist them in the development of their NIH-funded research careers
 - Scope includes basic, clinical, epidemiologic, social behavioral, and prevention HIV/AIDS science
 - Two RFA cycles per year – Spring & Fall; typically award 7-8 per year
 - Awards up to \$50,000
 - Faculty investigators at 8 participating DC CFAR institutions are eligible to apply as PI
 - The funds are provided to support early stage or new/transitioning investigators, with an emphasis on women and underrepresented minorities
 - Applications reviewed by 3 peer reviewers and 1 CPC member
- RFA to be released in mid-August
 - Pre-submission is required to submit a full application
 - Special consideration will be given to applications in the focus areas of the DC CFAR Scientific Working Groups (SWGs) in HIV Cure research and Ending the HIV epidemic and Scientific Interest Groups (SIGs) in Drug User Health, Women and HIV, Aging and Comorbidities, Latina/x/o, Global, and Sexual and Gender Minorities.
 - Applications also strongly encouraged with other large NIH-funded HIV studies in DC including the Multicenter AIDS Cohort Study/Women's Interagency HIV Study Combined Cohort Study (MACS/WIHS CCS), and the DC Cohort
 - 1 day grant writing workshop scheduled for September 16

Recent Pilot Award Recipients



**Kellan Baker, Whitman-Walker Institute;
Spring 2022**

Developing Best Practices for Integrating HIV Prevention into Gender-Affirming Care for Transgender Adults

**Lee Campbell, Georgetown University;
Fall 2021**

Identifying the effects of contemporary opioids on HIV proviral transcription and neuronal functionality

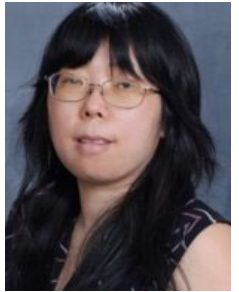


**Donaldson Conserve, George Washington University;
Fall 2021**

Developing Confirmatory HIV Testing and Linkage to Care Intervention Strategies for Men in Tanzania

**Yan Wang, George Washington University;
Spring 2021**

Substance use, mental health problems and HIV outcomes among female sex workers



**Ruth Kanthula, Georgetown University;
Fall 2020**

Prevalence of subclinical atherosclerosis among female adolescent and young adults with perinatally acquired HIV infection

Recent Award Recipients New to HIV



**Georges Haddad, Howard University;
Fall 2021**

Effects of cART on the Heart

**Alexander Zestos, American University;
Spring 2021**

*Assessments of potential impacts of
cognitive deficits on drug use and their
implications for HIV intravenous drug users*



**Mark Laubach, American University;
Spring 2021**

*Effects of HIV1 Tat and Antiretroviral
Therapy on the Rodent Frontal Cortex*

**Thomas Heinbockel, Howard University;
Fall 2020**

*HIV Tat Protein in CB1 Receptor-Mediated
Signaling in Central Olfactory Circuits*



DC CFAR Pilot Award Experience – Sarah Calabrese, PhD

- **2017 Pilot Award:** *Optimizing PrEP Social Marketing to Black MSM in DC to Raise Awareness and Uptake*
 - PI: S. K. Calabrese
 - Co-Is: M. C. Zea, M. Magnus, V. Patel, J. F. Dovidio, M. Kharfen
- **Application Process**
 - Supportive
 - Developmental core consultation
 - Stats consultation
 - Comprehensive
 - Practice writing NIH R-series grant app
- **Implementation Process**
 - Presentation to/feedback from Executive Committee
 - Responsive and resourceful when (numerous) roadblocks encountered

DC CFAR Pilot Award Experience

- **Outcomes**

- **Academic Presentations**

- Boone, C.A.†, Modrakovic, D.†, Rao, S.†, Galvao, R., Kalwicz, D.†, Wilbourn, B.†, Patel, V., Zea, M.C., Dovidio, J., Kharfen, M., Magnus, M., Poppen, P.J., Yeung, E.W., Bowleg, L., Calabrese, S.K., Factors associated with Black MSM's participation in biomedical HIV research, Biomedical HIV Prevention Summit, 2020 Dec, [virtual conference].
 - Calabrese, S.K., Dovidio, J.F., Patel, V.V., Modrakovic, D.†, Boone, C.A.†, Galvao, R.W., Rao, S.†, Kalwicz, D.†, Wilbourn, B.†, Kharfen, M., Magnus, M., & Zea, M.C., The stigmatizing effect of “targeting” US Black men who have sex with men in the social marketing of PrEP: A mixed methods study, XXIII International AIDS Conference, 2020 Jul, [virtual conference].

- **Non-Academic Presentations**

- Calabrese, S.K., Online Survey Data Collection: Lessons Learned and Recommendations, Adelante Scholars Webinar, Washington, DC [virtual], 2020 Jul
 - Also presented at DC CFAR Social and Behavioral Sciences Coffee Hour
 - Calabrese, S.K., Targeted Social Marketing of PrEP May Inadvertently Perpetuate Stigma, AIDS Foundation. Chicago, Chicago, IL, Chicago, IL [virtual], 2020 Oct

- **Manuscripts in Preparation**

- Calabrese, S.K., Dovidio, J.F., Patel, V.V., Modrakovic, D.†, Boone, C.A.†, Galvao, R.W., Rao, S.†, Kalwicz, D.†, Wilbourn, B.†, Kharfen, M., Magnus, M., & Zea, M.C., The stigmatizing effect of “targeting” US Black men who have sex with men in the social marketing of PrEP: A mixed methods study.
 - Modrakovic, D.†... Calabrese, S.K. Dissecting the onion: Identifying and remediating issues surrounding data validity in online survey research

- **Pilot Data and Methodological Wisdom for NIH R01 App**

† Student/Mentee

Other DC CFAR Experience

- **Involvement**
 - Sexual and Gender Minority Scientific Working Group
 - Social and Behavioral Sciences Core
 - Pilot grant peer review
- **Consultations**
 - Grant
 - Statistics
- **Didactic Opportunities**
 - Seminars, conferences, etc.
- **Funding Opportunities**
 - Administrative supplement award
- **Networking**
 - Local research resources (e.g., DC Cohort)
 - New collaborations



QUESTIONS?

CONTACT US!

Michael Bukrinsky mbukrins@gwu.edu
Sylvia Silver ssilver@email.gwu.edu
Anthony Wutoh awutoh@howard.edu
Mark Burke mark.burke@howard.edu
Kim Blankenship blankens@american.edu

Brandi Robinson bnrobin@email.gwu.edu
Vivian Kirkham vkirkham@email.gwu.edu